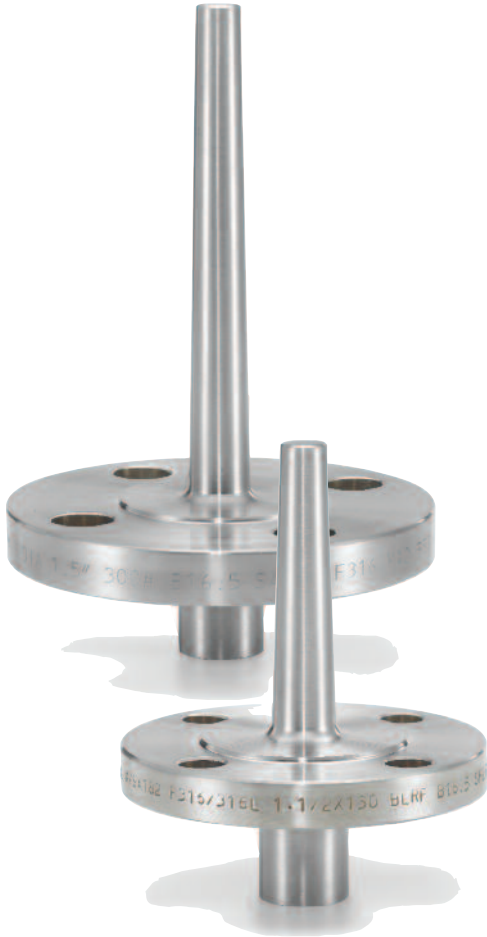


Flanged Thermowells



A thermowell provides invaluable triple duty service, by protecting your delicate temperature sensing instrumentation.

- Protects your instrument against corrosive effects and resulting physical damage caused by media flow.
 - Permits instrument interchange or calibration check without disturbing or closing down the process.
 - Helps to contain dangerous or costly process fluids, when properly installed as an integral part of the vessel or piping.
- Basic thermowell types are threaded, flanged, socket weld, weld-in, sanitary and van stone.

Shank configurations are available in straight, stepped or tapered styles. Extensive selection of materials are available to meet the demanding applications. Ashcroft's wide variety of thermowells are available for light duty, high pressures, high temperatures, or high velocity applications as well as meeting many general service industry needs.

- *One piece bar stock construction*
- *Large selection of mill traceable materials*
- *Stamped with material, heat number and date code*
- *Full penetration welds on flanged wells*
- *Various test reports and certifications*
- *Wake Frequency Calculations per ASME PTC 19.3 -2010*

PRODUCT SPECIFICATIONS

- Type:** Flanged
Shank Style: Straight, Tapered, Stepped
Bore Size: .260, .385
Process
Connection: 1", 1½", 2" flange sizes
Flange Facing: Raised, flat, ring joint
Rating/Class: 150#, 300#, 600# flanges
Materials: 304 SS, 316 SS with many others available on application
- Instrument**
Connection: 1/2 NPSM standard, NPT or others optional

PRODUCT OPTIONS

- Special bore diameters
- Additional flange sizes
- NPT threads for instrument connections
- Stamp tag numbers on thermowell
- SS tag
- Cap and chain
- Material test reports
- Wake frequency calculations

TYPICAL CODE

15 SIZE		W U-DIMENSION		0700 THREAD		LAGGING		H SHANK		F TYPE		260 BORE		C MATERIAL		CAP & CHAIN		VARIATION		FACING		RATING		SPECIAL LAGGING LENGTH	
CODE	INCHES	CODE	INCHES	CODE	LAGGING	CODE	LAGGING	CODE	TYPE	CODE	TYPE	CODE	TYPE	CODE	TYPE	CODE	MATERIAL	CODE	FACING	CODE	RATING #	CODE	RATING #		
10	1	0200	2	-	Without	F	Flanged	C	304	1	Brass	150	150					F	Flat						
15	1½	0400	4	L	With	S	316	2	SS	300	300							R	Raised						
20	2	0700	7							600	600							J	Ring-Joint						
		1000	10							1500	1500														
		1300	13							2500	2500														
		1600	16																						
		2200	22																						